

PUERTA AMÉRICA MADRID

One of Europe's most exciting hotel experiences!



KATHRIN FINDLAY- Floor 8



PLASMA STUDIO- Floor 4



JEAN NOUVEL - Floor 12



MARISCAL Y SALAS - Floor 11



A DIFFERENT STYLE
ON EVERY FLOOR

14 WELL APPOINTED MEETING ROOMS

hotel
**PUERTA
AMERICA**
madrid

WITH NATURAL DAYLIGHT



MODERN, ELEGANT

hotel
PUERTA
AMERICA
madrid

MAD
RESTAURANT



LOBBY



MARMO BAR

FUNKY, ORIGINAL



TERESA SAPEY -
PARKING



THE OBSERVATORY



KARRARA TERRACE

BEDROOMS

FLOOR 1 - ZAHA HADID



FLOOR 2- NORMAN FOSTER



BEDROOMS

FLOOR 3 - DAVID CHIPPERFIELD

FLOOR 4 - PLASMA STUDIO



HABITACIONES

hotel
PUERTA
AMERICA
madrid

FLOOR 5 - VICTORIO + LUCCHINO



FLOOR 6 - MARC NEWSON



BEDROOMS

FLOOR 7 - RON ARAD



FLOOR 8 - KATHRYN FINDLAY



BEDROOMS

FLOOR 9 - RICHARD GLUCKMAN



FLOOR 10 - ARATA ISOZAKI



BEDROOMS

hotel
PUERTA
AMERICA
madrid

FLOOR 11 - JAVIER MARISCAL
Y FERNANDO SALAS



FLOOR 12- JEAN NOUVEL



JOHN PAWSON MEETING ROOMS

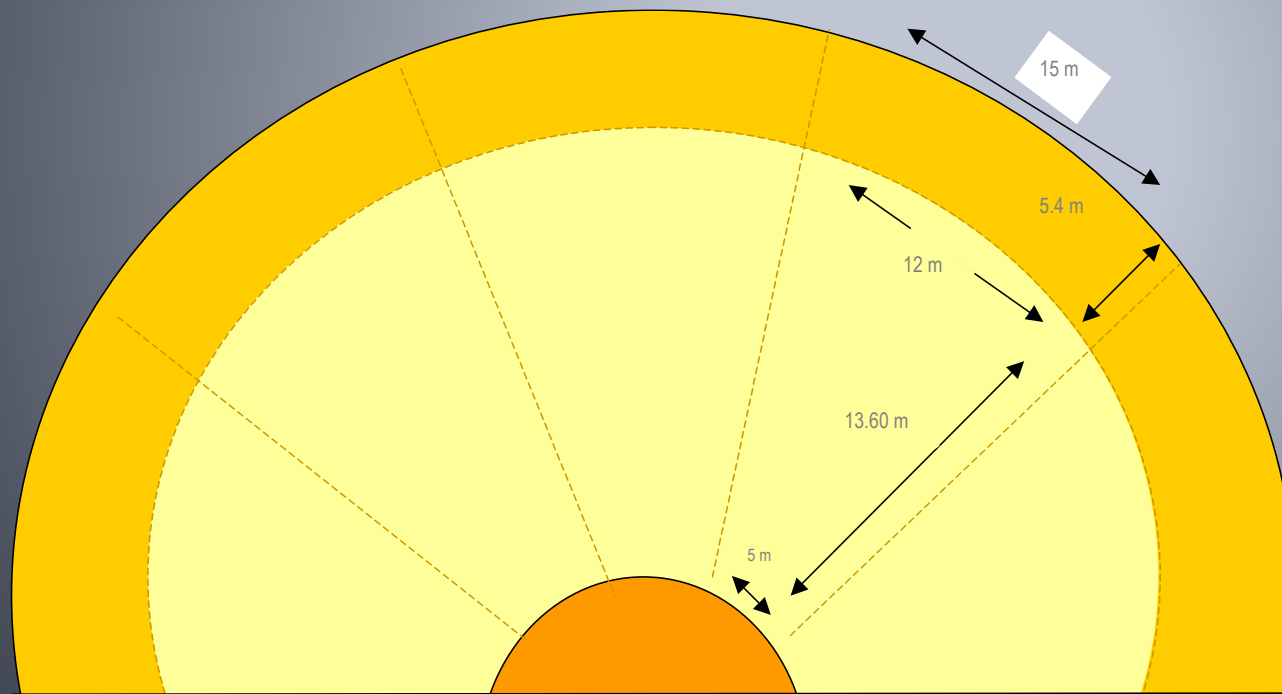
The main features of our event and convention rooms are minimalism, spaciousness and purity of lines, as designed by John Pawson. All these rooms cover a surface of 950 square meters, are located on the lobby floor of the Hotel and include the possibility of enjoying natural light. These rooms are ideal for your biggest events and conventions.

SALONES MEETING ROOMS	1	1+ AMPLIACIÓN	2	2+ AMPLIACIÓN	3	3+ AMPLIACIÓN	4	4+ AMPLIACIÓN	5	5+ AMPLIACIÓN	1+2+3+4+5+ AMPLIACIONES
SUPERFICIE/AREA	126	190	126	190	126	190	126	190	126	190	950
ALTURA/ HEIGHT	3,70	3,70	3,70	3,70	3,70	3,70	3,70	3,70	3,70	3,70	3,70
TEATRO/THEATER	105	150	105	150	105	150	105	150	105	150	750
AULA/CLASSROOM	70	95	70	95	70	95	70	95	70	95	450
FORMA U/ U SHAPE	32	47	32	47	32	47	32	47	32	47	-
IMPERIAL/BOARD ROOM	40	48	40	48	40	48	40	48	40	48	-
BANQUETE/BANQUET	70	100	70	100	70	100	70	100	70	100	600
COCKTAIL/COCKTAIL	170	210	170	210	170	210	170	210	170	210	1000

*Each of our 5 convention rooms can be used independently or jointly by combining the different parts, thus creating the ideal room to meet your needs in terms of space and capacity, depending on the type of assembly.

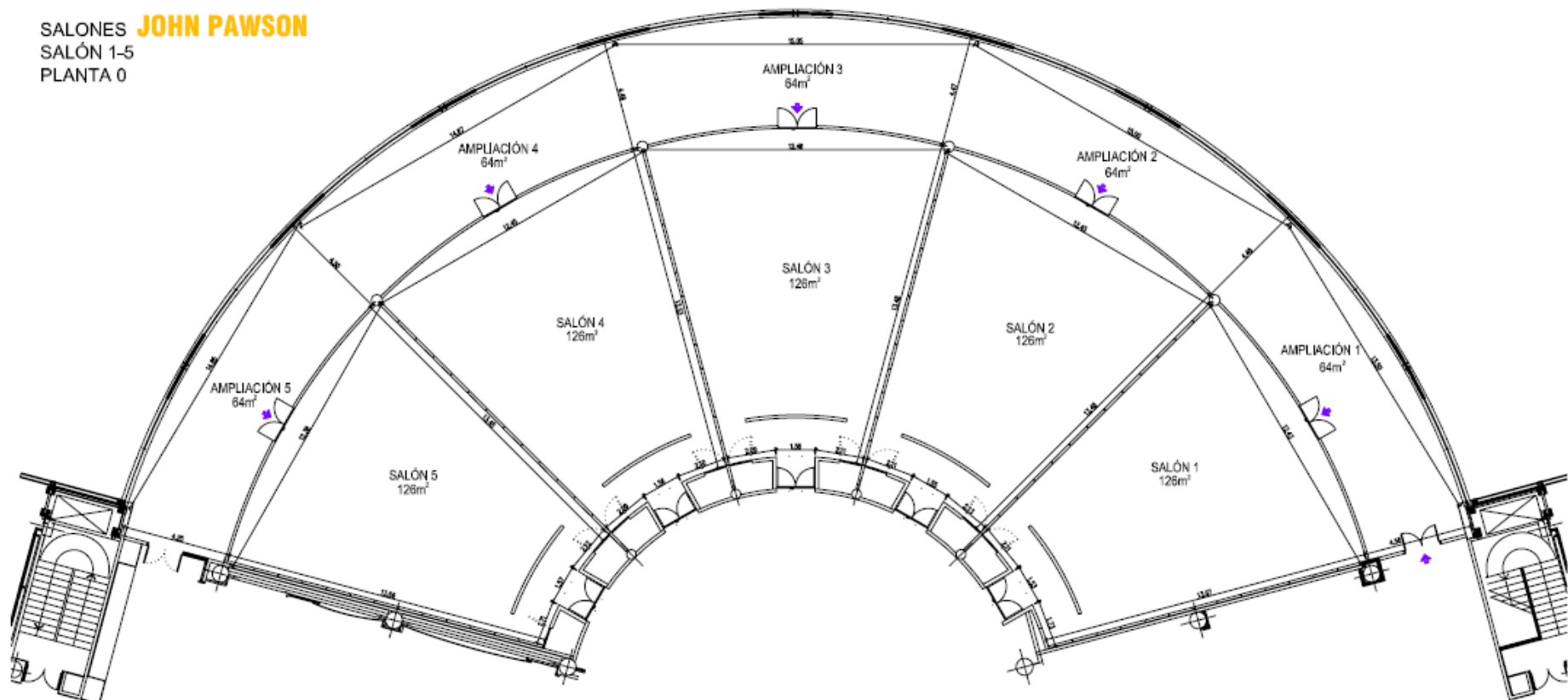
JOHN PAWSON MEETING ROOMS hotel PUERTA AMERICA madrid

- Each of our 5 convention rooms can be used independently or jointly by combining the different parts, thus creating the ideal room to meet your needs in terms of space and capacity, depending on the type of assembly.
- The 64 meter extensions can only be used as annex to each of the meeting rooms and may not be booked independently. Meeting room extensions can be used where no soundproofing is needed.



- Should you be interested in having an Autocad map in order to design a project, please contact to the Events Department.
- All 5 meeting rooms have the same size and features, separated by Mobile Corian Door.

SALONES **JOHN PAWSON**
SALÓN 1-5
PLANTA 0



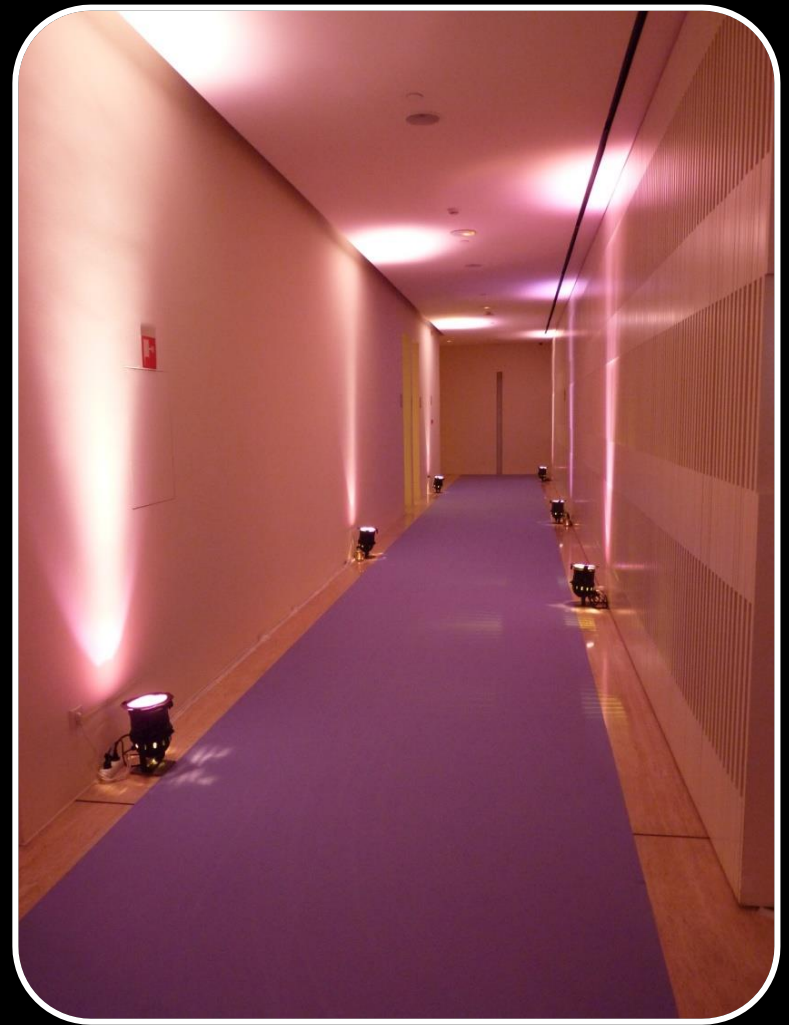
		SURFACE / ÁREA (m²)	HEIGHT / ALTURA (m)							
--	--	------------------------	------------------------	--	--	--	--	--	--	--

SALÓN 1	salón 1	126	3,70	105	70	32	40	70	170	48
	ampliación 1	64	3,70	45	25			30	40	24
	completo	190	3,70	150	95	44	48	100	210	72
SALÓN 2	salón 2	126	3,70	105	70	32	40	70	170	48
	ampliación 2	64	3,70	45	25			30	40	24
	completo	190	3,70	150	95	44	48	100	210	72
SALÓN 3	salón 3	126	3,70	105	70	32	40	70	170	48
	ampliación 3	64	3,70	45	25			30	40	24
	completo	190	3,70	150	95	44	48	100	210	72
SALÓN 4	salón 4	126	3,70	105	70	32	40	70	170	48
	ampliación 4	64	3,70	45	25			30	40	24
	completo	190	3,70	150	95	44	48	100	210	72
SALÓN 5	salón 5	126	3,70	105	70	32	40	70	170	48
	ampliación 5	64	3,70	45	25			30	40	24
	completo	190	3,70	150	95	44	48	100	210	72

ENTRADA/ACCESS



JOHN PAWSON MEETING ROOMS



JOHN PAWSON MEETING ROOMS

JOHN PAWSON TERRACES

hotel
PUERTA
AMERICA
madrid

Next to John Pawson meeting rooms, our terraces are the perfect place for all type of outside celebrations + events.
A garden right in the heart of Madrid with more than 500 sq. meters.



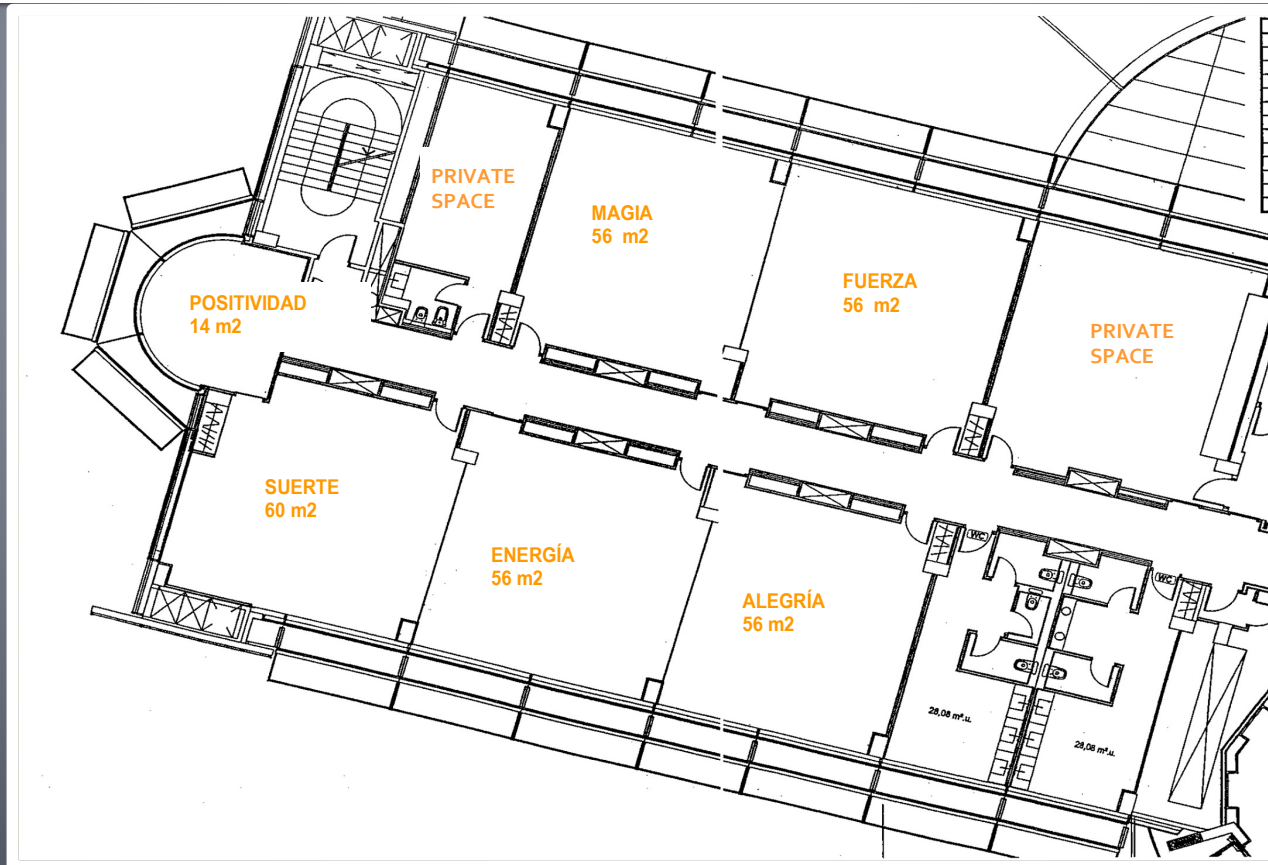
VICTORIO & LUCCHINO ROOMS

Please choose among the appealing names that different Andalusian Couturiers have suggested for these meeting rooms: Suerte, Energía, Alegría, Magia, Fuerza y Positividad. Six names for six exclusive, elegant and welcoming spaces. Six rooms with the possibility of enjoying or dimming the natural light.

SALONES MEETING ROOMS	ALEGRÍA	ENERGÍA	SUERTE	ALEGRÍA+ENERGÍA+ SUERTE	MAGIA	FUERZA	MAGIA+ FUERZA	POSITIVIDAD
SUPERFICIE	56	56	56	168	56	56	56	14
ALTURA	2,40	2,40	2,40	2,40	2,40	2,40	2,40	2,40
TEATRO	40	40	40	100	40	40	70	-
ESCUELA	30	30	30	96	30	30	64	-
FORMA U	24	24	24	56	24	24	40	-
IMPERIAL	20	20	20	60	20	20	40	10
BANQUETE	-	-	-	-	-	-	-	-
COCKTAIL	30	30	30	90	30	30	60	10

VICTORIO & LUCCHINO ROOMS

Rooms Alegría, Energía, Suerte and Positividad can be used independently or jointly by combining the different parts. Rooms Magia and Fuerza can also be used in this manner. This way we can create the ideal room that caters for your needs in terms of space and capacity, depending on the type of assembly. All rooms have natural light.





VICTORIO & LUCCHINO MEETING ROOMS

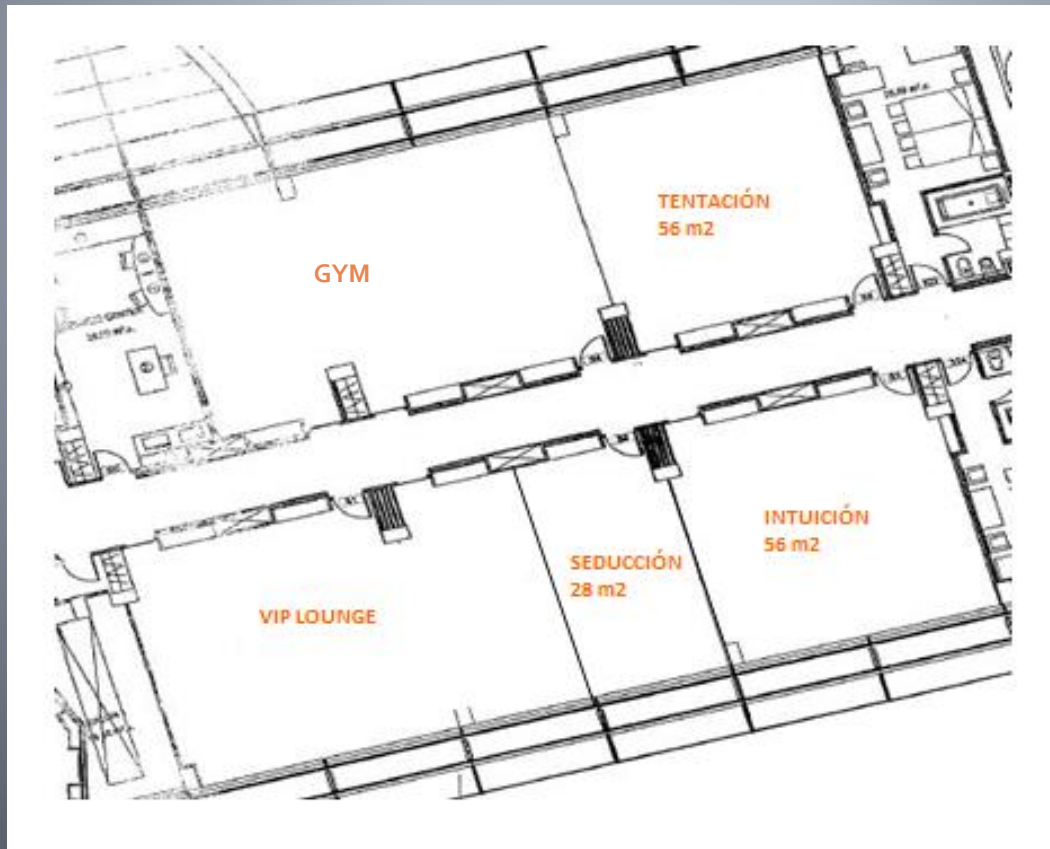
VICTORIO & LUCCHINO ROOMS

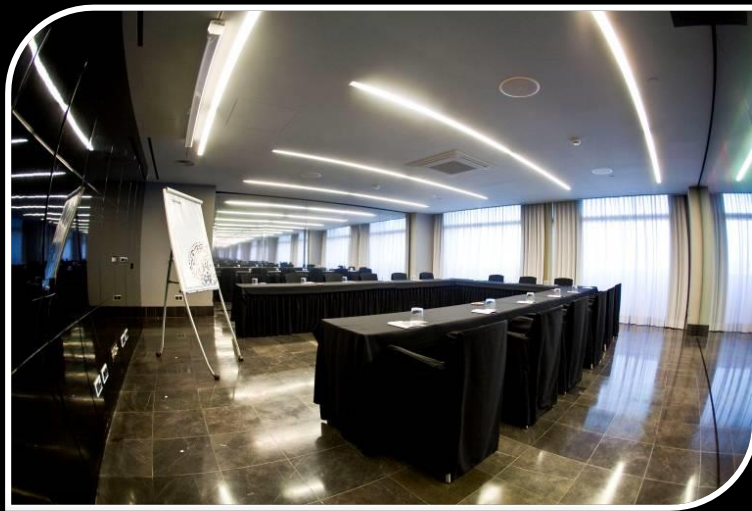
Please choose among the appealing names that the hotel have suggested for these meeting rooms: Tentación, Seducción and Intuición. Three names for three exclusive, elegant and welcoming spaces. Three rooms with the possibility of enjoying or dimming the natural light.

SALONES MEETING ROOMS	TENTACIÓN	SEDUCCIÓN	INTUICIÓN
SUPERFICIE/AREA	56	28	56
ALTURA/ HEIGHT	2,40	2,40	2,40
TEATRO/THEATER	40	-	40
AULA/CLASSROOM	30	-	30
FORMA U/ U SHAPE	24	-	24
IMPERIAL/BOARD ROOM	20	10	20
BANQUETE/BANQUET	-	-	-
COCKTAIL/COCKTAIL	30	-	30

VICTORIO & LUCCHINO ROOMS

Rooms Tentación, Seducción and Intuición cater for your needs in terms of space and capacity, depending on the type of assembly. All rooms have natural light.





VICTORIO & LUCCHINO ROOMS

SKYNIIGHT JEAN NOUVEL

Looking for a unique and exclusive venue? Please come to celebrate your most special events in our avant-garde spaces on the 13th floor of the Hotel, designed by Jean Nouvel. Cool and sophisticated atmosphere, along with spectacular views.



CONTACT

Please find below the contact data for our Groups + Events Team:

T. +34 917 445 400- Hotel

T. +34 917 445 408- Groups + Events Direct Line

E-mail: cristina.umpierrez@puertamerica.com

ACCESS PLAN

